



The **IDT40** is a laser module with a slim 20 mm diameter aluminium housing.

This laser can be equipped with different diffractive optics to project sharp dot, line, multiline, cross, grids or special patterns.



Each laser of this series can be customized according to the needs of our customers.

It is also suitable for indoor applications where the work environment is particularly bright and can easily be installed or retrofitted on many types of machinery.

The **IDT40** has operating voltages of 5 VDC or 24 VDC.

The laser beam is focused to minimize spot size and give the sharpest possible projections.

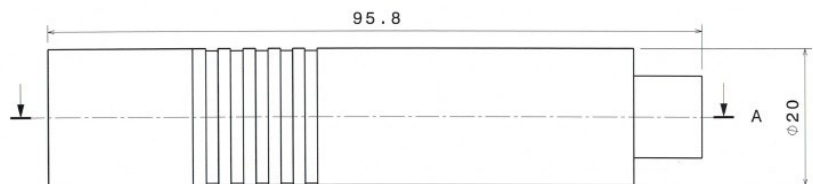
Electrical and Optical Specifications

Available Wavelengths (nm)	From 375 to 488	520	From 635 to 690	From 700 to 1770
Available power outputs (mW)	0.6—200	0.6-60	0.5-200	0.5-200
Supply Voltage (V)	24 Vdc	24 Vdc	5—24 Vdc	5—24 Vdc
Operating Current (mAh)	From 20 to 300	From 20 to 160	From 20 to 250	From 20 to 300
TTL Modulations	Available (to 3MHz)			
Electrical isolation	Potential-free housing			
Protections	Over temperature protection, reverse polarity and transient protection (ESD, burst & surge)			

Optical Specifications

Beam size at aperture	$\varnothing/e2\ 60$
Ray stability (mRad/°C)	0.01
Fan angles*2	5°, 10°, 20°, 30°, 45°, 60°, 75°, 90° (homogeneous lines) 10°, 15°, 20°, 30°, 90° (Gaussian line profile)
Line straightness	<0,05 %
Line uniformity	>25 % (Gaussian)
Optics*2	Point elliptical, point circular, multi line, crosses, grids ecc.
Focus range	10 mm up to 10.000 mm (fixed focus)

Mechanical Specifications		
Size	Length	95.8 mm
	Diameter	20 mm
Power connections	Pin 1 : positive - Pin 3 : negative White wire : positive Brown wire : negative	
Housing	Anodised aluminium	
Safety Class	1, 1M,2,2M,3R,4	
Connections	4-pin M12 plug	



Environmental Specifications	
Protection	IP 66 and IP 68 certified
Storage temperature	-40 to +85 °C
Operating temperature	-80 to +50 °C
MTTF	From 10.000 to 15.000 h/25°C*3

For high power we recommended to provide the laser with an additional form of external heatsinking.

Upon request, lasers and their accessories can be customized