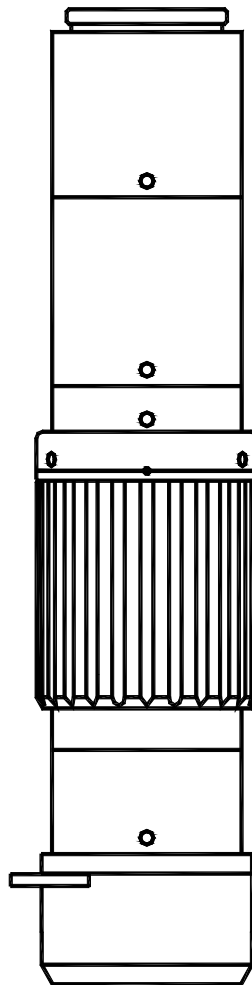
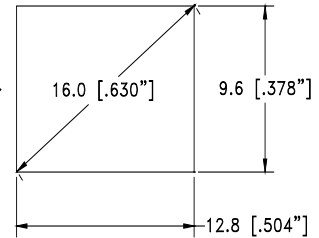


INFINIPROBE™ MS

Variable Magnification Lens

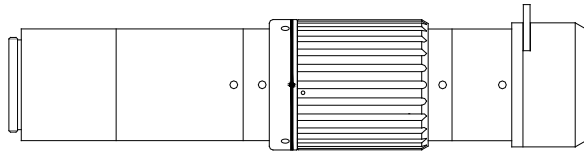
(For use with up to 1-in. sensors)



InfiniProbe MS™ Instructions for Use

The InfiniProbe MS Macro System is a variable magnification lens capable of use with up to 1-in. format C-mount cameras. It can be internally focused without outer dimensional changes, from infinity to as near as 16mm and at variable magnifications from 0 to 3x and 0 to 4x (depending on the extender chosen--see below).

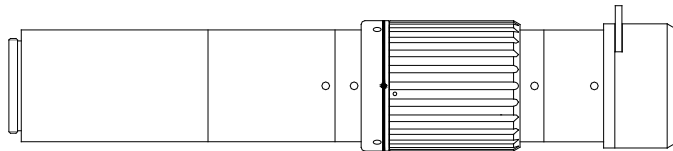
The InfiniProbe MS is simplicity itself. Just attach it to any C-mount camera. Position it anywhere within its two operating range choices (Extender 1 or Extender 2) and turn the focusing ring to acquire the image. A variable iris permits control of light, aperture and contrast. Its imagery is as good as it is because the InfiniProbe MS is nothing less than a C-mount version of the InfiniProbe TS-160.



LENGTH: 151.30mm [5.957"]

w/EXTENDER 1

WEIGHT: 182g [6.5 oz.]



LENGTH: 175.90mm [6.925"]

w/EXTENDER 2

WEIGHT: 196g [7.0 oz.]

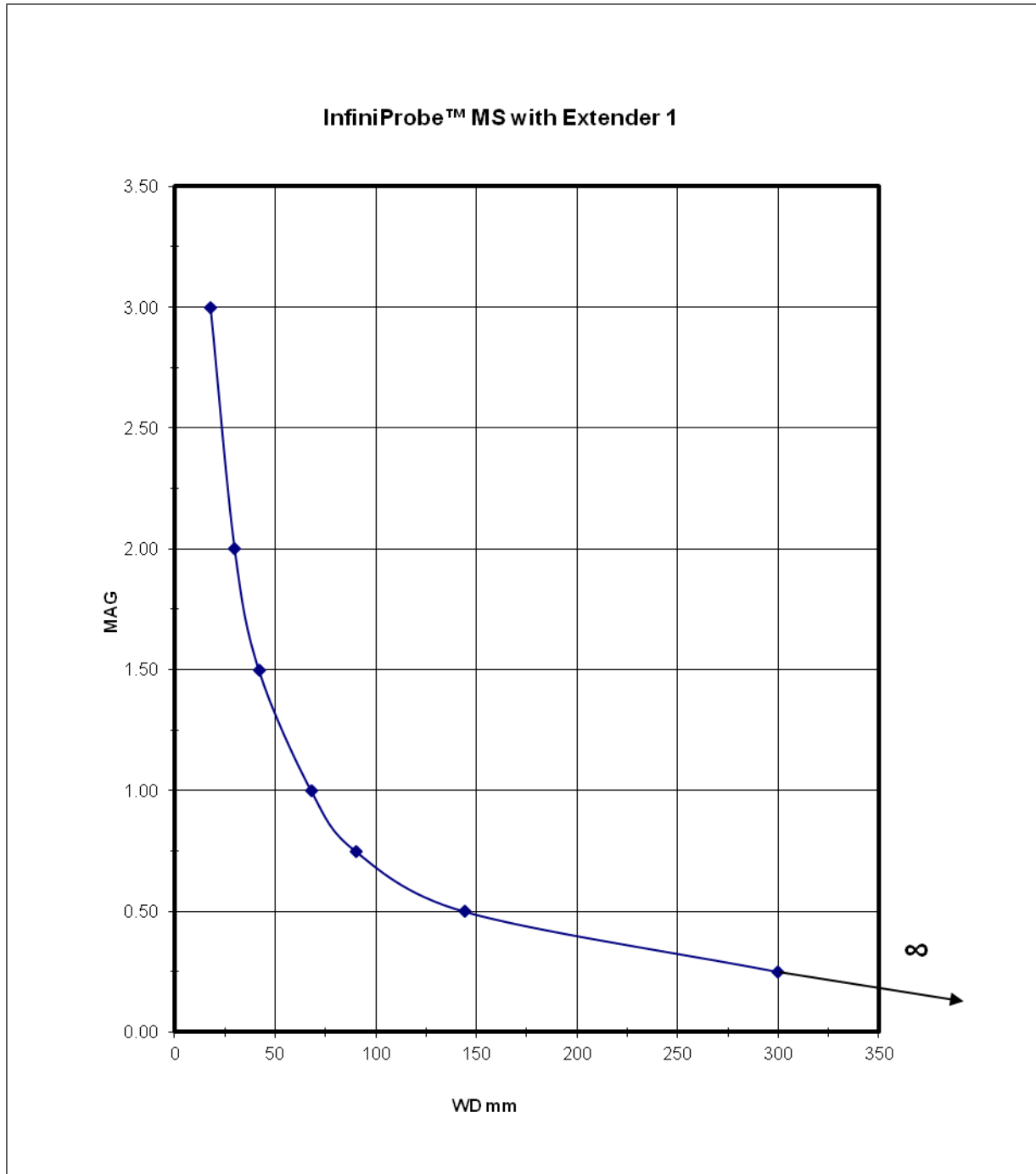
InfiniProbe MS with Extender 1

WD mm	18	30	42	68	90	144	300
Mag	3.00	2.00	1.50	1.00	0.75	0.50	0.25
FOV mm	4.3	6.4	8.5	12.8	17.1	25.6	51.2

FOV based on 1-in. format (12.8mm horizontally).

For formats other than 1-in.: Divide magnification into the sensor's horizontal dimension.

For example, 1/2-in. Sensor: $6.4\text{mm}/2x = 3.2\text{mm}$ FOV.



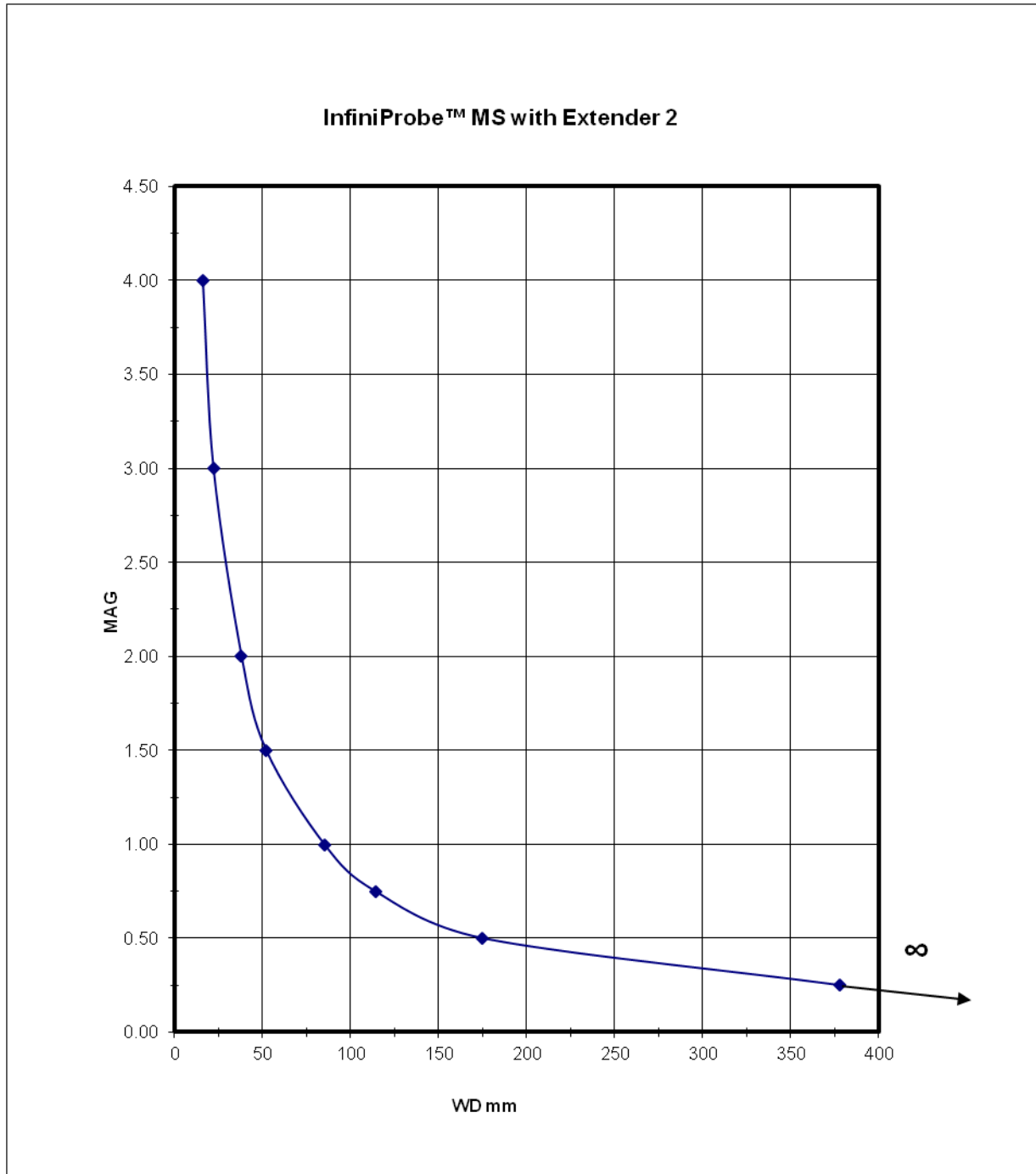
InfiniProbe MS with Extender 2

WD mm	16	22	38	52	85	114	175	378
Mag	4.00	3.00	2.00	1.50	1.00	0.75	0.50	0.25
FOV mm	3.2	4.3	6.4	8.5	12.8	17.1	25.6	51.2

FOV based on 1-in. format (12.8mm horizontally).

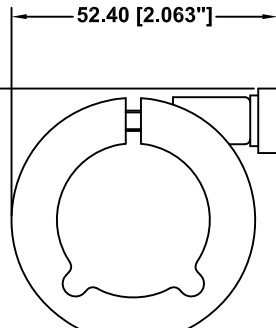
For formats other than 1-in.: Divide magnification into the sensor's horizontal dimension.

For example, 1/2-in. Sensor: $6.4\text{mm}/2x = 3.2\text{mm}$ FOV.



Care and cleaning. The InfiniProbe MS should be treated as the fine lens that it is. Care should be taken to keep dust and dirt off external lens surfaces. The unit can be cleaned (metal parts only) by a cloth moistened with alcohol. The external optical surfaces should be cleaned only when necessary, and then, only by a soft cotton swab moistened by an approved optical glass cleaner. If you have further questions, please contact Infinity Photo-Optical Company or your authorized dealer.

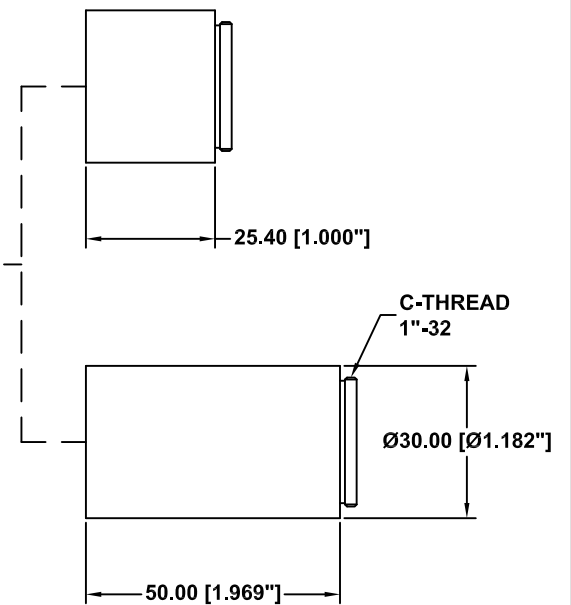
OPTIONAL SMALL MOUNTING CLAMP



47.35 [1.864"]

52.40 [2.063"]

OPTIONAL EXTENDERS



25.40 [1.000"]

C-THREAD 1"-32

Ø30.00 [Ø1.182"]

50.00 [1.969"]

IRIS DIAPHRAGM

FOCUSER

C-THREAD 1"-32

38.20 [1.504"]

Ø33.32 [Ø1.313"]

Ø30.00 [Ø1.182"]

36.00 [1.417"]

55.90 [2.201"]

125.90 [4.957"]

REVISIONS				
ZONE	REV	DESCRIPTION	DATE	APPROVED

This drawing is for informational purposes only.
No other rights or privileges are granted or implied.

ALL DIM ARE mm [inches] AND ARE FOR REFERENCE ONLY AND ARE SUBJECT TO CHANGE.

INFINITY Photo-Optical Company
www.infinity-usa.com

INFINIPROBE™ MS SYSTEM

Date: 04/14/14 MB

SIZE B	FSCM NO.	DWG NO. -	REV -
------------------	----------	--------------	----------

Modified:

SCALE NONE	-	SHEET 1 OF 1
----------------------	---	------------------------

Video Formats

Format	Factor	Diagram
1/4"	0.5	
1/3"	0.75	
1/2"	1.0	
2/3"	1.375	
1"	2.0	

Unless otherwise noted all data is given for 1/2" camera sensors. For FOV or magnification in other sensor sizes use the factors listed. For example, a FOV of 25mm listed for a 1/3" camera would be $25 \times 0.75 = 18.75\text{mm}$.

INFINITY PHOTO-OPTICAL COMPANY LIMITED WARRANTY

INFINITY PHOTO-OPTICAL COMPANY hereby warrants its products to be free from defects in workmanship or materials for the warranty period set forth below. INFINITY PHOTO-OPTICAL COMPANY, at its option, shall repair or replace the defective product without cost to the purchaser, and such repair or replacement shall be the full extent of this express limited warranty. INFINITY PHOTO-OPTICAL COMPANY shall not be liable for any other damages either direct or consequential.

This warranty is made to the original purchaser, and is effective only on new equipment purchased from INFINITY PHOTO-OPTICAL COMPANY, or a dealer authorized by INFINITY PHOTO-OPTICAL COMPANY to sell the product.

This warranty is valid only when the product is returned to the authorized dealer from whom it was purchased, or returned directly to INFINITY PHOTO-OPTICAL COMPANY, freight prepaid, with proof of date of purchase.

This warranty does not extend to any defect, malfunction or failure caused by misuse, abuse or the use of the product with equipment for which it may not have been intended. Any unauthorized repair voids this warranty.

The warranty period for all products manufactured by INFINITY PHOTO-OPTICAL COMPANY is five (5) years from date of original purchase. Parts or components made or sourced from other manufacturers shall be solely covered by that manufacturer's warranty.

The warranty contained herein is the only warranty made by INFINITY PHOTO-OPTICAL COMPANY. Any implied warranty of merchantability and/or fitness for a particular purpose is expressly excluded from this warranty. INFINITY PHOTO-OPTICAL COMPANY shall not be liable for any expense, loss, incidental or consequential damages which may arise in connection with the use of this equipment. Recovery under this warranty is limited to repair or replacement of the equipment as provided above.

INFINITY PHOTO-OPTICAL COMPANY reserves the right to modify designs, equipment and accessories without notice.

RETURNING INFINITY PRODUCTS FOR SERVICE

Warranty Repairs:

If you have reason to think something is wrong or functioning improperly with your Infinity Photo-Optical product under the terms of the Warranty, please contact us to explain the problem. We can not accept items sent to us without first discussing the problem and providing you with a return merchandise authorization (RMA). Customer is responsible for delivery charges to us. We will examine the product and inform you whether or not the Warranty applies. If so, we will repair/replace the item to factory specifications free of charge. Return delivery charges will be paid by us. If the item(s) is/are deemed out of Warranty, we will advise if repairs can be made at a quoted charge. If customer refuses to authorize a charged repair, item will be returned at the customer's expense.

Repairs of Out of Warranty Products:

Often, we get requests to fix or repair products which are clearly older models out of Warranty. Before attempting to send such to us, please contact Infinity to go over what is desired. It is helpful to send us photos of the product so that we can see if there is a reasonable basis for a repair. Often, older instruments are "inherited" in a department and may have been tampered with by previous users. Infinity products obtained second-hand may have missing parts. After obtaining an RMA as detailed above for Warranty repairs, we will examine the item(s) and provide you with an estimate of charges for repair and return delivery to a level of performance agreed upon. Sometimes it is not possible to cost-effectively repair a product that has been abused or disassembled. A slight cosmetic defect may not affect performance and if so, we will not repair or replace it unless instructed to do so at additional charges. Upon your authorization for us to perform the repair, you will be charged at the price previously quoted for the service and delivery charges involved.