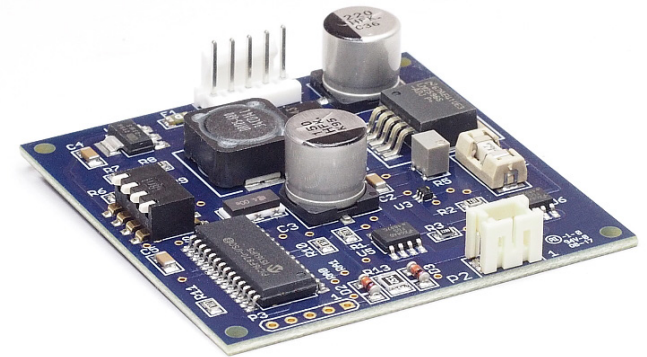


Uniblitz® ED12DSS

Open Frame Single-Channel Bi-Stable Shutter Driver



Overview

The Uniblitz ED12DSS is an open-frame, bi-stable shutter driver well-suited for integration into OEM applications. Installation requires a connection to a user-supplied power supply and input and output harness connectors, and the selection of the open and close pulse duration using the on-board 4-position piano switch. The TTL pulse duration determines the shutter's exposure time.

See the [ED12DSS User Manual](#) for additional information regarding this device. The ED12DSS is **RoHS compliant**.

Need Support? Please [visit our website](#) or email us at info@uniblitz.com.

Tel: 585-385-5930 | Toll-Free: 800-828-6972 | Fax: 585-385-6004 | 803 Linden Ave. Rochester, NY 14625
Updated 4/23 | Datasheet Version 5.2 | ©2023 Vincent Associates

What's Included

- ED12DSS Shutter Driver
- Manual (included on flash drive)
- **203D** Shutter Interconnect Cable (1.0 m)
- **ED-IOP** Input Cable

Optional

- **PS12** +12 VDC, 25W, Power Supply w/ US line cord

Shutter Compatibility

CS	DSS	ES	LS	NS	TS	VS	XRS
	DSS10B	ES6B		NS15B ¹	TS2B		
	DSS20B			NS25B ¹	TS6B		
	DSS25B			NS35B ¹			
	DSS35B			NS45B ¹			

¹ Will require "ED" option ("For use with ED12DSS...") for ED12DSS compatibility.

Technical Specifications

System Characteristics

Repeat Exposure Minimum time between exposures is determined by shutter used and open close pulse duration.

Shutter Drive Continuously variable frequency of exposures from DC to the shutter in operation maximum rate.

- Trigger Input
- Active-high
 - TTL Compatible

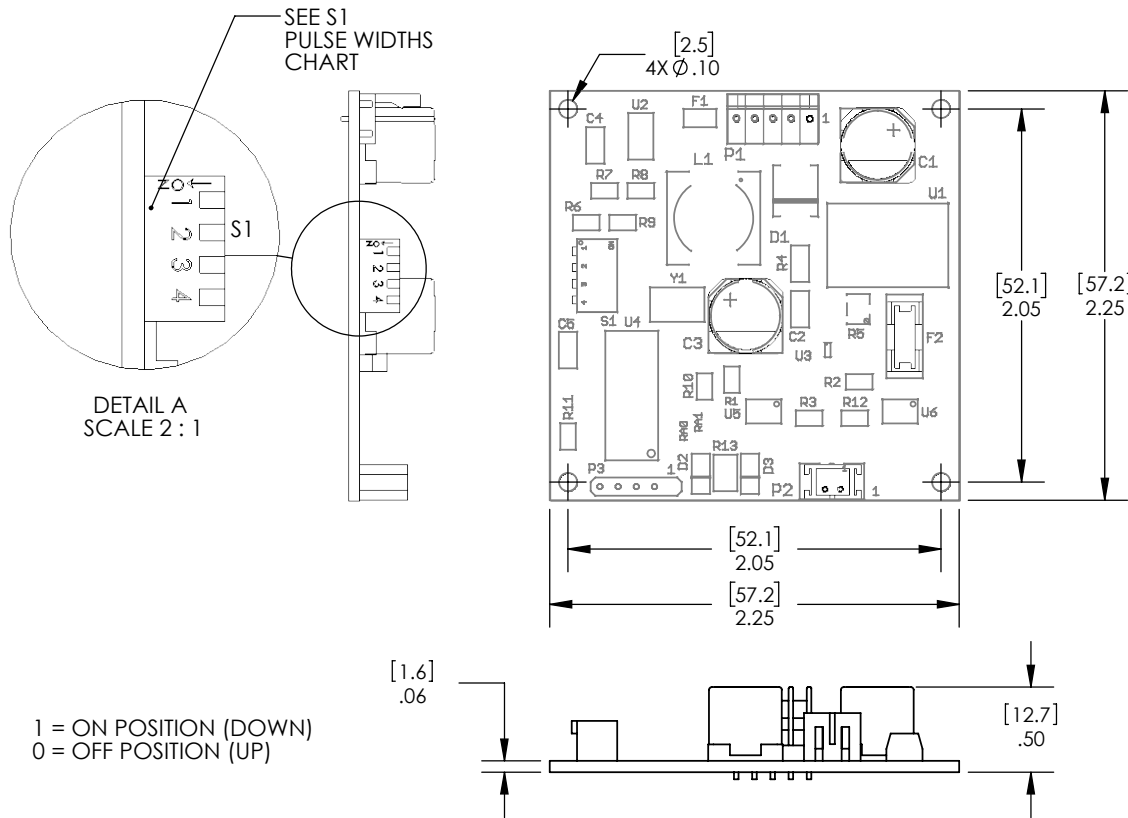
General Characteristics

Size (HWD) 0.50 x 2.25 x 2.25 " (12.7 x 57.2 x 57.2 mm)

Weight 0.73 oz (21.00 g)

Power input +12VDC to +24VDC at 1.5A (user supplied)

Device Layout & Pin Connections



S1 (OPEN/CLOSE) PULSE WIDTHS						
1	2	3	4	TIME SELECT		CORRESPONDING SHUTTER SETTING
0	0	0	0	5msec		TS2B
1	0	0	0	10msec		TS6B
0	1	0	0	15msec		DSS10B, NS25B, NS15B
1	1	0	0	20msec		
0	0	1	0	25msec		DSS20B
1	0	1	0	30msec		NS35B, NS45B
0	1	1	0	35msec		DSS25B
1	1	1	0	40msec		
0	0	0	1	45msec		DSS35B
1	0	0	1	50msec		
0	1	0	1	55msec		
1	1	0	1	60msec		
0	0	1	1	65msec		
1	0	1	1	70msec		
0	1	1	1	75msec		
1	1	1	1	80msec		

NOTES:

- P1 CONNECTIONS:**
 INPUT - PIN 1: +12 ~ 24VDC REG.
 PASSIVE - PIN 2: POWER GND
 PASSIVE - PIN 3: SIGNAL GND
 INPUT - PIN 4: TRIGGER INPUT (ACTIVE HIGH)
 OUTPUT - PIN 5: +5VDC, .25A MAX.
- P2 CONNECTIONS:**
 OUTPUT - PIN 1: SHUTTER (A)
 OUTPUT - PIN 2: SHUTTER (B)
- F1 IS A .25A F-A SMT FUSE
 F2 IS A .75A S-B SMT FUSE
- OVERALL HEIGHT APPROXIMATELY .750" WITH INPUT HARNESS CONNECTED.
- ALL DIMENSIONS MAXIMUM
 [MM]
 [INCH]

P1 Connections

Pin 1	Input	+12VDC to +24 VDC Reg
Pin 2	Passive	Power GND
Pin 3	Passive	Signal GND
Pin 4	Input	Trigger Input (Active High)
Pin 5	Output	+5 VDC / 0.25A Max

P2 Connections

Pin 1	Output	Shutter (A) Driver Output
Pin 2	Output	Shutter (B) Driver Output