



RS200 PC Based

2-port RFID UHF IoT Reader



The RS200 PC Based is a 2-port RFID UHF fixed reader for IoT applications. It is equipped with a wide range input power, USB, UART and 4 GPIO interfaces. With its compact design, it is not only applicable for RFID portals, it is also suitable for POS stations, and Production flow controls at the same time.

The RS200 PC Based is a lightweight RS200 version which is equipped with a high performance RFID module - ThingMagic M6e (Mrico). User can directly control the RFID module inside the RS200 PC Based through the USB or UART interface via M6e API or the corresponding utility. With the high performance RFID module, the RS200 PC Based can reads up to 750 tags per second at distances over 9 meters (30 feet) when configured with appropriate antennas. User can leverage high performance M6e module and its rich and diverse SDKs to build their own RFID application system.

Application Examples

- Mobile Inventory : Drones, Robot
- Manufacturing
 - Production Equipment Tracking
 - Operator Identify
- Retail
 - Self-checkout application
 - Kiosk Services

Technical Summary

- RFID Gen2 V2 / ISO18000-6C RFID IOT Reader
- Reads up to 750 tags/s
- 2 RFID antenna ports with RP-SMA connectors
- Transmit power: from +0dBm to +30dBm
- One 12 VDC Jack-in and 2 pins 12-24VDC TB in
- One RS-232 port with Terminal block
- 4 GPIO
- Dimension 100 x 89.4 x 27 mm
- Weight 216g
- Metal Housing

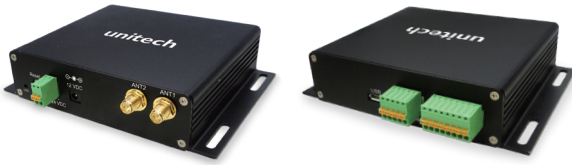
AT A GLANCE

- RFID Gen2 V2 / ISO18000-6C 2-port fixed reader
- +30dBm max transmit power and fast tag reading rate
- ThingMagic M6e Micro module inside (RAIN RFID supported)

Features

- USB interface can support x86 64-bit driver
- User can directly connect to M6e module's USB, UART, and GPIO interface via external connectors.
- Redundant and Different Input Power Interfaces for different application
 - One DC Jack and a Terminal block for 12 to 24 VDC input power.
- High Reading Rate
 - The high reading rate (750+) to save time and keep inventory easily.
- Compact Form Factor
 - Small size metal housing allows easily installation, which can be used in most of applications.

RS200 PC Based 2-port RFID UHF IoT Reader



RFID Performance / Interface

Standard Supported	EPC Class 1 Gen2 V2
RFID Engine	ThingMagic M6e Micro (RAIN RFID supported)
Fastest Read Rate	750 tags/sec
Antenna Ports	2 ports with RP-SMA connectors
RF Power output	0dBm to 30dBm, ± 1.0 dBm (Default 30dBm) 0dBm to 24dBm (JP SKU only)
RF Power control	Command-adjustable
Frequency Range	EU: 865-868 MHz US: 902-928 MHz Other regions
Frequency Region	Pre-configured for these regions: US/EU/JP/TW/CN

User Environment

Vibration	MIL-STD-810G. Method 514.6 Procedure I
Shock	MIL-STD-810G. Method 516.6 Procedure I
Operating Temp.	-20 ~ 60°C
Storage Temp.	-40 ~ 80°C
Humidity	5-95% non-condensing
Electrostatic Discharge	+/-12kV air discharge +/-8kV contact discharge

Communication

USB Interface	Micro USB connector USB interface can support x86 64-bit driver
Serial Interface	2 UART Pins (5-pins terminal block connector)
Digital IO Interface	4 GPIO Pins (8-pins terminal block connector)

Electrical

Power	DC Jack-in (connected to 12V power adapter) 2 pins DC Terminal block input (12 to 24 VDC)
Push Button	For warm reset
LED	Power Indicator

Physical Characteristics

Dimension	100 x 89.4 x 27mm
Weight	216g
Housing Material	Metal



Headquarters

Taipei, Taiwan
<http://www.ute.com> e-mail: info@hq.ute.com

unitech America

Los Angeles
<http://us.ute.com> e-mail: info@us.ute.com
<http://can.ute.com> info@can.ute.com
Mexico
<http://latin.ute.com> e-mail: info@latin.ute.com

unitech Asia Pacific & Middle East

Taipei
<http://apac.ute.com> info@apac.ute.com / info@india.ute.com
<http://mideast.ute.com> info@mideast.ute.com

unitech Europe

Tilburg / Netherlands
<http://eu.ute.com> e-mail: info@eu.ute.com

unitech Japan

Tokyo
<http://jp.ute.com> e-mail: info@jp.ute.com

unitech Greater China

Beijing, Shanghai, Guang Zhou, Xiamen
<http://cn.ute.com> info@cn.ute.com
Taipei <http://tw.ute.com> info@tw.ute.com

